

# Hauppauge!® WinTV-USB

## Quick Installation Guide

### for Windows XP/ME/2000/98SE

**Note:** DO NOT Install the **WINTV-USB** until your PC has been turned on and Windows has booted.

#### Contents of the WinTV-USB package

**WinTV-USB** or **WinTV-USB-FM** device

**1 meter Audio cable** - sound cable for connecting between the WinTV-USB and your sound card

**S-Video to Composite video** adapter

**FM radio antenna** (on models with FM radio)

**WinTV-USB Installation for Windows CD-ROM** with:

**Drivers** for Windows98SE, WindowsMe, Windows2000 and WindowsXP



**WinTV2000** application

**SoftPVR™**

**WinTV-Scheduler**

#### Step 1: Connect the TV and Video/Audio cables

Connect a **TV aerial** or **cable TV** to the WinTV-USB connector marked **TV**. If you have a WinTV-USB with FM radio, attach the supplied **FM antenna** to the connector marked **FM**.

You can also connect an A/V source such as a VCR, camcorder or video camera to the WinTV-USB. Connect the video from your A/V source to the **S-Video In** connector. If you have a composite video source, use the **S-Video to Composite adapter**. Connect the audio from your A/V source to the WinTV-USBs' **Line-In** jack.

#### Audio from the WinTV-usb

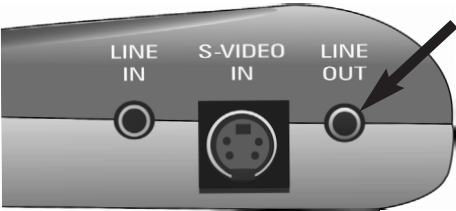
There are two ways that audio gets into a PC or laptop from the WinTV-usb:

- either using the supplied 1 meter audio cable to bring **analog audio** from the WinTV-usb into the Line-in jack on your PC or laptop, or
- by using the USB cable to bring **digital audio** from the WinTV-usb to your PC or laptop.

The default audio setting is: **Analog audio input to the PC while watching live TV** and **Digital audio over USB while recording**. This gives the best audio quality.

#### If your PC or laptop computer has a sound card with a Line-In connector:

connect the **Line-Out** jack on the WinTV-USB to your sound card's **Line-In** jack. To do this, plug one end of the supplied **1 meter audio cable** into the jack marked **Line Out**. Plug the other end into your **PC's sound card LineIn** jack.



#### If your PC or laptop does not have a Line-In connector:

you can enable Digital audio over USB while watching live TV. To do this, see the section **"Enabling live audio over USB"**.

#### Step 2: Boot your PC

DO NOT PLUG THE WINTV-USB into your PC until your PC has fully booted..

Turn on and boot into Windows. Then plug the **WinTV-USB** into one of the USB connectors on the back of your PC. You can plug WinTV-USB into either USB 1.1 or USB 2.0 ports.

**Note:** it is not recommended to connect the **WinTV-USB** to a USB Hub or Keyboard.

#### Step 3: Install the WinTV-USB driver for Windows XP

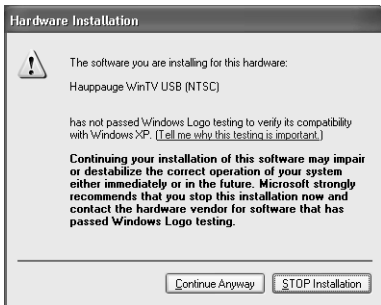
**3-1** After the WinTV-USB is installed, the **Found New Hardware Wizard** will appear.

When you see this dialog box, insert the **WinTV-USB Windows Installation CD-ROM** into your CD-ROM drive and click **NEXT**.

Click **NEXT**, to **Install the Software Automatically (Recommended)**.



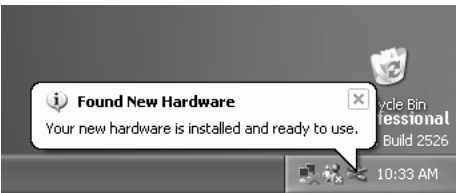
**3-2** Windows will start to install the WinTV-USB driver.



**3-3** When the Hardware Installation dialog box appears click **Continue Anyway**.



**3-4** Click **Finish** to complete the driver installation.



**3-5** When the driver installation is complete, this message should appear on the Windows start bar.

#### Step 4: WinTV Software installation



After the **WinTV-USB driver** has been loaded, run the WinTV setup program.

Run **SETUP.EXE** from the **WinTV-USB Installation CD-ROM**.

For example (if your CD-ROM is on driver E:), click Start then Run then **E:\Setup.exe**

Click **Install** to start the WinTV installation.

#### The WinTV2000 TV application

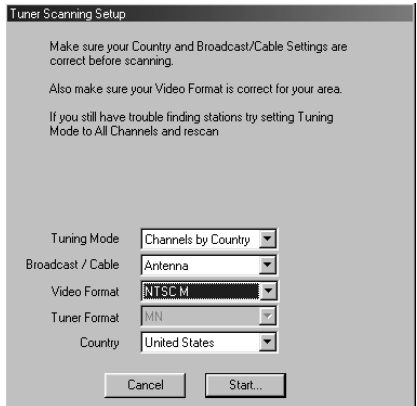
To run the WinTV2000 application, double click the **WinTV2000 icon**.

#### Scanning for channels

When running WinTV for the first time, you will need to scan for your TV channels. If you are using Cable TV, in the **Broadcast/Cable** box select **Cable** (or Cable HRC). Otherwise select **Antenna**.

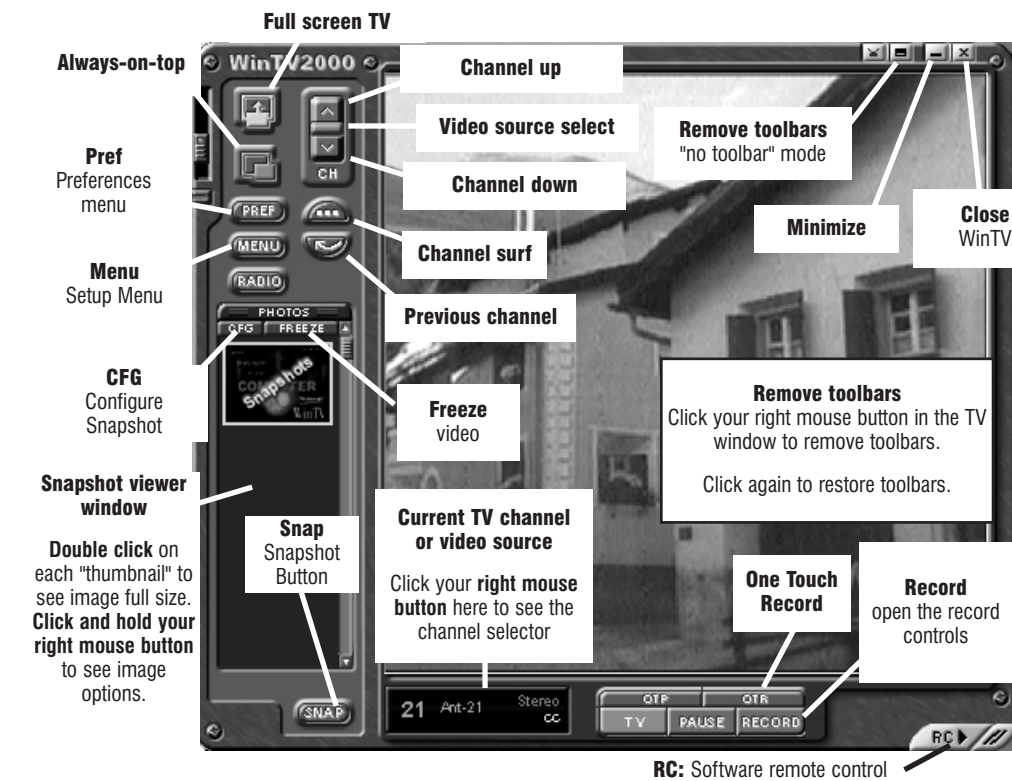
Choose the **Video Format** for your geographic region, then click on **Start**:

North America uses **NTSC M**  
Europe uses **PAL B/G**  
the U.K. uses **PAL I**  
in South America, **PAL M** or **PAL N** is used



#### Setting up the channels

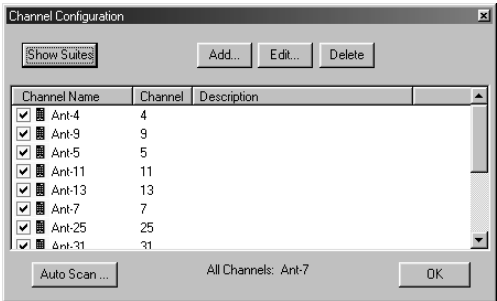
After you have scanned for channels, you can add channel names and fine tune for better



reception. To do this, click the **Menu** button on WinTV2000, then click **Suite Manager**. You can also **click and hold your right mouse button**, then click **SuiteManager**.

Click on the **desired channel**, then **Edit**. Change the **ChannelName** to the name of the station, change the description or fine tune.

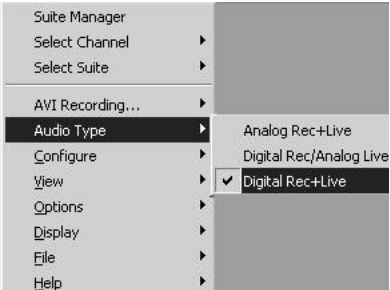
Then click **OK**.



#### Enabling live audio over USB

After you complete the WinTV-USB driver installation, the default Audio setting is: **Analog audio input to the PC while watching live TV** and **Digital audio over USB while recording**.

If your PC or laptop does not have a Line-in jack, or if you would like to simplify the installation of the WinTV-usb, you can enable Digital audio while watching TV and while recording. To do this, click on the **Menu** button and go to **Audio Type** and select **Digital Rec+Live**.



**Close and reopen the WinTV application** to have the changes take effect.

#### Selecting an External Video source (VCR, camcorder, etc.)

Click the **green Video source select** button to select **TV**, **Composite** and **S-Video** sources. The video sources will use the TV standard chosen when you scanned for your TV channels (NTSC or PAL).

#### Rescanning for channels

Click the **Menu** button and click on **Suite Manager** and then **Auto scan**. Make sure you select cable or antenna in **Broadcast / cable**. Chose the correct **Video format** for your region and then click **Scan**.

#### Displaying TV full screen

When you click the **Full screen TV** button, TV will appear full screen. When finished watching TV full screen, click your **right mouse button** in the TV window.

If you see video with a black box around it, click the **Pref** button then click **TV mode** tab. Check the box which says **"Allow resolution change"**.

#### "Always-on-Top" mode:

With **Always on Top**, the WinTV window can always be visible on your Windows desktop. To turn on Always-on-Top, simply click the **Always-on-top** button. It will turn green. To turn off Always on Top, click this button again.

A convenient way to use Always-on-Top is to make the TV window in the no-title mode small, and to make the TV window in the title mode larger. Then you can switch very quick from a small window to a larger one simply by clicking the right mouse button.

#### Menu button

Click the **Menu** button to open the TV Setup menu. Here are the main controls for TV channels, and duplicate controls for other functions:

**Suite Manager:** configure the TV tuner (scanning, naming, fine tuning, etc.), setting up 'favorite channel lists' and set an external A/V source to a TV channel.

**Configuration:** duplicate configuration menus for color, audio, MPEG settings, etc.

**View:** for setting the TV window size

#### Pref button

Click the **Pref** button to open the **Preferences** menu. You will have tabs for:



**View:** these are the settings for the **On Screen Display** of the **TV channel** and **Audio Volume**, where you can enable **Close Captions**, plus controls for the **Toolbar mode (Title mode)**, **NoToolbar mode (No Title)** and **Full Screen (TV mode)**.

**Movies:** here is where you configure the **video and audio settings** for SoftPVR. You can set the **movie record directory** (DVCR Record File Path), the **MPEG Quality** settings, and the **Audio** settings.

**Snap Shot:** here is where you can set the **size of your captured images** plus single or two field captures.

**Audio:** your **audio settings** are configured here.

**Color:** **adjust the color** of your TV picture here.

**To hide the WinTV toolbar:**

Simply click your **right mouse** button in the WinTV’s video window for the **no-title** mode. To restore the toolbars (the **title** mode), once again click **your right mouse button** in the WinTV’s video window. You can set the size of the window differently in each mode.

**To allow WinTV to display TV full screen:**

Click on the **Pref** button in WinTV2000 (or click on **Display / Preferences** in WinTV32), then click **TV mode**, and check the box which says **“Allow resolution change”**. When you click the **Full screen TV button** on WinTV2000, Windows will change your screen resolution to either 640x480 and TV will appear full screen.

When finished watching TV full screen, click your **right mouse button** to return to “TV-in-a-window” mode.

**Installing the WinTV driver for Windows 98SE**

- After the WinTV-USB is plugged in, the **Add New Hardware Wizard** will appear. Click **NEXT**. Select **Search for the best driver for your device (Recommended)**. Click **NEXT**.
- When you see the **Windows will search ...** dialog box, insert the **WinTV-USB Installation CD-ROM** into your CD-ROM drive. Select **CD-ROM drive** and click **NEXT**.
- Once the **Hauppauge WinTV-USB** video driver has been detected, click **NEXT**.
- You will see a number of files being copied to your hard disk drive.
- Click **FINISH**.

**Note:**

If the driver is not found or if there are any other problems encountered while installing the driver, you may cancel this step entirely and install the drivers manually.

Double click on **My Computer** (on your windows background, usually in the upper left hand corner of your screen) click the **Right mouse button** on the **WinTV-USB Installation CD-ROM** drive and select **Open** on the pop up menu. Double click on the folder called **USB** then double click on the file **USB98.XP.EXE** and follow the on-screen instructions.

Note: After rebooting your PC, you may be asked to insert your Windows98 CD ROM. Be sure to use the exact version of Windows 98 that is installed on your system. If you are using Windows98SE, do not use a Windows98 Gold CD-ROM.

**Keyboard shortcuts**

+	channel up	Ctrl C	Image Copy to the clipboard
-	channel down	Ctrl F	Image freeze
Page Down	Volume Down	Ctrl M	Mute audio
Page Up	Volume Up	Ctrl P	Image print
Ctrl T	Full screen TV		

**Recording MPEG video with SoftPVR™**



**Note:** The following functions are not currently enabled with SoftPVR: the **OTP** and **Pause buttons**, plus the **Fast Forward** and **Rewind** functions.


**Note:** a Pentium III 800MHz minimum system is recommended for best SoftPVR operation.

To start recording, either click the **OTR (One Touch Record)** or the red **Record button** on WinTV2000. You can also start a recording by using **WinTV Scheduler**.

To stop recording, click **Stop**. To close the recording controls, click the **TV mode button**.

If you click OTR more than once, a record timer will be set and the record timer will be set 15 minutes for each time the OTR button is clicked. For example, if you click the OTR button 3 times, the WinTV will record for 30 minutes.


The recorded video file is saved in the **DVCR Recorded File Path** directory. To set this directory, click the **PREF button** (Preferences menu), then the **Movies tab**. In **DVCR Record Path** set the directory for your recordings.


 **Record Button:** Clicking the Record button will automatically generate a file name and start recording your audio/video program. Everytime you record a file, a new file is automatically created and the file name is displayed in the record window. The first file name will be \_dvcr001.mpg. The second file will be \_dvcr002.mpg and so on.

While recording:

- Live video** continues to play in the WinTV window
- The Counter** will display the length of your recording in hours:minutes:seconds
- If you had started recording with the **OTR button**, and had clicked it more than once, the **total time for the recording will also be displayed**. You can also click OTR after a record has been started, and the record timer will be set.

Click the **Stop button** to stop your recording. The recorded audio/video file is then saved to disk using the automatically assigned file name. The Time counter is reset to 00:00:00 after the recording is saved.

 **Play Button:** Clicking the Play button will playback from disk the last video file created. With SoftPVR, you can only Play and Pause your videos.

 **File Button:** Clicking the File button opens the File menu. The last file recorded is listed in the File name box. In the File menu you can: Rename your recorded video file, Play a video file previously recorded, Delete recorded video files.

**If you have problems with audio:**

If you find that there is no audio while playing back your AVI files, this is because the sound card has not been setup to record audio from its 'Line-in' socket. To enable audio recording, open the **Recording Control** panel by clicking **Start / Run** and then **SNDVOL32 / REC**. This will open the Recording Control panel. Make sure that **'Line-in'** is enabled (this is sometimes called 'Line' or 'Aux').

**WinTV-Scheduler**

**WinTV-Scheduler** allows you to schedule the recording of TV shows. **WinTV-Scheduler**, once it is set, can be closed, and the **WinTV** application will “wake up” at the desired time and tuned to the desired channel.

After installation, **WinTV-Scheduler** can be found on your desktop. WinTV-Scheduler can also be run by clicking **Start/Programs/Hauppauge WinTV/Scheduler**.

**WinTV-Scheduler** works by using the **Windows Task Scheduler** to launch **WinTV** at the chosen time. **WinTV-Scheduler** sets up a command line in Task Scheduler to run WinTV2000, specifying a TV channel and a length of time to record. At the scheduled time, WinTV2000 will open, and the record menu will roll down and start recording.

To set up a scheduled recording, run **WinTV-Scheduler** and click on the **Add Program**.

The items that need to be set for each event are:

- Time to Begin** Program
- Time to End** Program
- Program Period:** one time, daily, weekly
- Date to Begin Program:** todays date is the default. Change this if you want to schedule on another date.
- Source selection:** leave set at WinTV2000 to bring up the WinTV at the requested time and on the requested channel.
- Channel selection:** chose one of your scanned channels.
- Recording options:** click on **Record to File** to record your show. You can also **name your file** to record, in the dialog box below.

Once these are set, click **Set Program**. You can add more **Events**, clicking **Set Program** after each event is set. When you are finished click **Close**. The **WinTV** program does not have to be running for the **Scheduler** to work. If **WinTV** is not running, it takes about 10 seconds to start **WinTV** and to start the recording of TV.

WinTV-Scheduler also works with the following on-line Electronic Program Guides: TitanTV in North America, TVTV in Europe and iEPG in Japan.

**WinTV Radio (on some models)**

To launch the WinTV radio application, click the **Radio** button on the WinTV2000 application. You can also launch the WinTV radio application by running it from the **ProgramFiles/WinTV** directory.



**Using the WinTV-radio Buttons**

- Volume: The audio volume is adjusted by setting the Windows volume Lineln.
- Tune: Fine tune the current radio channel.
- Seek: Search for the next active FM radio channel.
- Mem: Sets an FM radio channel preset. To assign the current station to a preset, click on Mem and then on one of the Preset buttons (1-10).
- Mute: Turn off the sound
- Mono: Force mono reception. Default is stereo audio.
- Scan: Searches for new stations until you click on Stop. Click the **RIGHT mouse button** anywhere on the WinTV-radio window to set the Scan mode.
- Min: Minimizes the WinTV-radio window.
- CD: Starts your systems **Audio CD-Player** for playing back Audio-CD’s.
- TV: Closes the radio application and starts the WinTV application.
- OFF: Closes the radio application.
- 1-10: Preset 1 - 10

**Quick Troubleshooting Guide**

- If you receive any of the following error messages, your VGA card does not support Overlay Mode. Run Primary.EXE from the WinTV directory, selecting Primary surface mode:

- Black screen (no video image)
- Excessively slow and/or pixelated TV image
- Error message: “Connecting Preview Pin Direct to Overlay Mixer”

- If you receive any of the following error messages, your WinTV-USB driver was not loaded correctly:

- “Error: Cannot Locate Capture Filter (Hauppauge WinTV capture)”
- “Cannot build filter graph”
- “Error: connecting VCap and HCWcapt filters”
- “Error: preview pin direct to overlay mixer”
- To fix this problem, run HCWCLEAR.EXE which can be found in the Misc\Utilities directory of the WinTV-USB Installation CD-ROM.
- Then remove the WinTV-USB device and reboot your PC. After reboot, the WinTV-USB driver will reload. The latest version of the WinTV-USB driver can be found on our Web site at [http://www.hauppauge.com/html/sw\\_tvusb.htm](http://www.hauppauge.com/html/sw_tvusb.htm)

- To verify that you have Windows98 and above, click on Start/Settings/ControlPanel then click on the System icon. In the General tab under System you should see Microsoft Windows98 Version 4.10.1998 or Microsoft Windows98 Second Edition.

- To insure that you have USB support, click on Start/Settings/ControlPanel then click on the System icon. Under the Device Manger tab you should see that you have a Universal Serial Bus Controller.

- To check if your installation was successful, click on Start/Settings/ControlPanel then click on the System icon. Under the Device Manger tab go to Sound, Video and Game Controllers and check that it has the line: Hauppauge WinTV-USB.

- The WinTV-USB will not run under Windows95 or WindowsNT 4.0

- When video is running, Windows will not enter suspend mode.

- If the live video display freezes when you open other applications, you should reduce the Hardware acceleration of the PC Display Adapter (this may happen only on several specific display adapter cards). Go to Control Panel and click on Display. Select 'Setting', then click on Advanced Properties, select the Performance tab and you will see the Hardware acceleration bar. Reduce the performance to None.

- Note that if Overlay mode is selected, no live video is displayed during video capture or video streaming (video streaming is used by some Videoconferencing and Video Mail applications).

- Turn off the PC power management to achieve better performance in Control Panel.