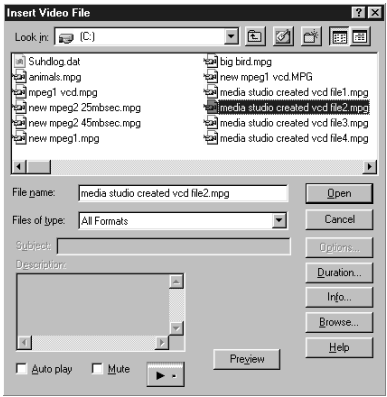


Step 2: Insert your DV videos

Capture or insert a Video Clip. To insert a video clip which has previously been captured, click on **Insert, Video File**. Then highlight the file you want to insert and click **Open**.



Step 3: Create a Video CD file

To make the MPEG file for Video CD, click **File, Create Video file**. Select **MPEG file (*.mpg)** from the save as type list. Then click the **options button** and select the **Compression Tab**. Make sure **VCD NTSC (North America and Japan)** or **VCD PAL (Europe and other parts of Asia)** is selected and click **Ok**. Enter a File name for your production and click **Save** to make your movie.

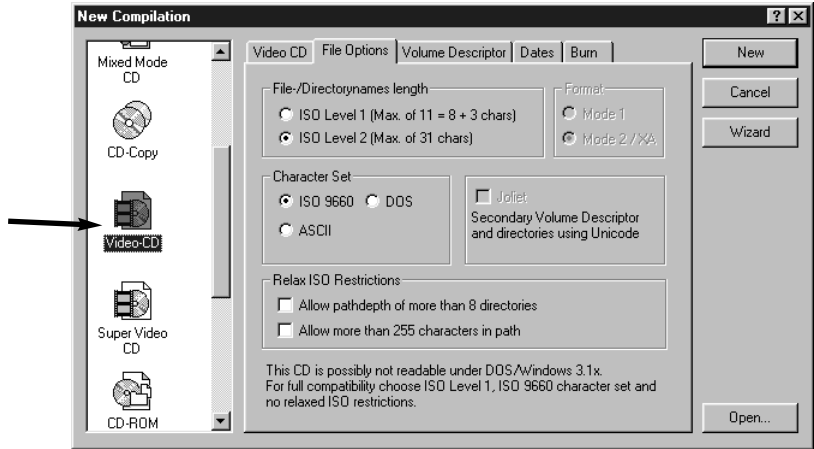
It will take approximately 4 times (the exact amount of time will vary based on your CPU speed) your video movie length to make the Video CD movie. For example, a 10 minute movie will take approximately 40 minutes to complete this step.



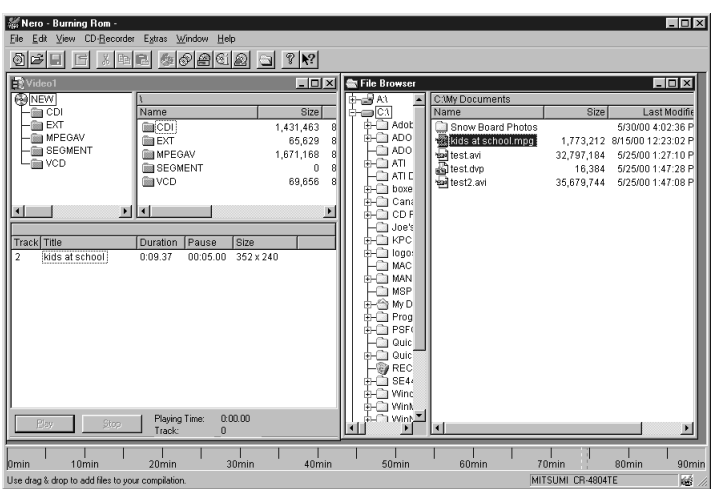
Step 4: Burn the Video CD to CD-ROM

Run **Nero - Burning ROM** software.

- Click on **Start / Programs / Nero - Burning Rom**
- In the **New Compilation** box, click on **Video-CD**. If you want to name your Video CD, select the **Volume Descriptor** tab and enter a name under **Volume Label**.
- Click on the **New** button to open Nero Burning Rom Main Menu:



Locate the **Video CD** file created in the **Create a Video CD** section above. MediaStudio uses the directory where you located the original video files as the default. In the example shown here, the directory used is **My Documents**, and the Video CD file is called **kids at school**. **Drag** and **drop** the selected file into the **Track/Title** window.



- Click on **File / WriteCD**. Then click **Write**. Insert a **blank CD-RW disk**. It takes about 12 minutes to write a Video CD disk with a 4X CD-RW writer.

Note: *Hauppauge recommends using CD-RW media to create Video CD's for DVD playback. Most DVD players can use CD-RW media, while some can use either CD-RW or CD-R media. If you insert one of the created Video CD's and the DVD player does not turn on the Video CD light or display Video CD on your TV screen, then try creating a Video CD using a CD-R media.*

Troubleshooting Guide

Problem: Scrambled picture with JVC or Cannon camera.

Cause: Windows installs the generic Microsoft drivers, but they should be the Texas Instruments (TI) drivers or Generic 1394 DV Camcorder drivers in the Sound, video and game controllers.

Solution: Download the **DVConnect322.exe** file from <ftp://206.112.34.138/hauppauge/support/>

Make sure the camera is switched off. Install the drivers - restart Windows - plug the camera in - Windows should now detect the camera as a 1394 DV Camcorder.

Question : I am having problems installing the DV-Wizard Pro board, and getting my camcorder to work.

- If you are running Windows98, right click on the **"My Computer"** icon. Pull down and choose **Properties**. Select **General** tab. The box that comes up should say **System: Windows98 Second Edition** or if the date reads **4.10.98**, you will need to upgrade to Windows98-SE in order to use the **DV-Wizard Pro**.
- The **DV-Wizard Pro** requires your camcorder to be **OHCI IEEE 1934 compliant**. Check the camcorder manual or with manufacturer for questions on the compliance.
- Refer to Question: **I have DV-Wizard Pro board and MediaStudio installed, but I cannot capture videos successfully.**

Question : How do I update the 1394 DV Camcorder driver to Microsoft DV Camera and VCR in Windows98-SE?

- Go to **Control Panel \ Systems \ DeviceManager \ SoundVideoGameController \ 1394DV Camcorder \ Properties \ Driver \ Update Driver**.
- Click **Next**, select option **Display a list of all the drivers in a specific location**.
- Click **Browse**, input **'C:\Windows\INF'** then click **OK**. (C:\Windows) may be changed to the folder where your Windows is installed)

- Select the **'MS DV Camera and VCR'** then click **OK**.
- Follow Windows instructions. There will be a warning message to warn user that the current driver is better then the selected one, click **Yes** to change it.

Question : I have DV-Wizard Pro board and MediaStudio-SE installed, but I cannot capture videos successfully.

The following steps must be confirmed:

- In **Control Panel / System** click on the **Device manager** tab. Under **1394 Bus Controller**, the **PCI OHCI IEEE 1394 Host Controller** should be listed.
- Make sure no loose connection between DV camcorder and **DV-Wizard-PRO IEEE-1394 card**, then turn on the DV camcorder. Step 4a.
- In **Control Panel / System / Device Manager / 'Image device'**, you should see **'Microsoft DV Camera and VCR'** listed.
- In **MediaStudio / Setup / Switch Capture Plug-in**. Make sure **Ulead DirectShow Capture Plug-in** is selected
- In **MediaStudio / Setup / Ulead DirectShow Capture Plug-in, Microsoft DV Camera and VCR** should be listed and have a tick in front of it (selected). Step 5d
- In **MediaStudio / Setup / Device Control**, select **MS 1394 device control**. Then you should be able to control the DV camcorder (VTR mode) by MediaStudio. If you get an error message **Unable to open specified device**, your DV camcorder cannot be detected by MediaStudio. Make sure your DV camcorder is turned on and recheck your cables.

Question : How do I capture a single frame?

The captured frame will adopt the current displayed video frame size and data type.

- Click **Start / MediaStudio / Video Capture**.
- Play an existing video or capture a new video.
- Click **Control / Pause**, to stop the video on the selected frame
- Click **Capture / Single Frame**
- The frame will be sent to the chosen destination – Clipboard or File. For File, key in a filename when standard save dialog box appear.

Question : How do I output DV video to a DV camera?

- Turn on your camcorder and set it to **Play mode (or VTR mode)**. See your camcorder's manual for specific instructions.
- Click **Start / Ulead MediaStudio / VideoEditor**
- Click **File / Select Device Control**. From the Current device list, select **MS 1394 Device Control**.
- Click **File / Export / MS DV Record**.
- Select the **DV AVI** file that you want to send to your camcorder. Click the **Open button**.
- In the **DV Recording / Preview Window**, preview your DV file and click **Next**.
- In the **DV Recording / Record Window**, click the **red DV recording button** to begin recording the movie to your camcorder.
- Click **Finish button** when the video transfer is completed

Question : Why is rendering process so slow? How do I speed it up?

MediaStudio's Smart Rendering mechanism works by copying the unchanged frames to reduce the rendering time. For Smart Rendering to work, make sure the rendering video has the same settings - such as frame size, frame rate, data rate and compression. The properties of the clip is available by **right clicking** on the video. Modify the settings for rendering in,

- File / Create / Video File / Options / Video Save option dialog box, select General tab
or

- File / Convert / Video File, select a source file to open. At Select Destination video file dialog box, select Options / General tab.

For clips with a lot of titles, transition effects or large frame sizes, it will take longer time to render.

Question : Can I use Ulead MediaStudio-Pro SE to edit MPEG-2 or QuickTime (MOV) video files?

Yes. You are able to edit the video files

Question : I have a Hauppauge WinTV board in my system. Will I be able to capture and edit the video from tuner, composite or S-Video?

Yes. We recommend that you use the **WinTV2000** Video Capture application to capture video when using the **WinTV**. The captured video is saved in an AVI file, and then can be used in MediaStudio as another source for video clips. Here is what you do:

- Click the **RC button** found in the lower right hand corner of the **WinTV2000** application. Click on the **advanced controls** bar to roll down the VCR and Snapshot configuration menu.
- Click the **1. FILE** button. Find the directory you would like to store your video files in. One convenient spot is the default directory for MediaStudio: C:\ProgramFiles\UleadSystems\UleadMediaStudio\

Set the **Frame Rate** to **15.00** Click on the **VideoCompression** button and set the Compressor to **Uncompressed** or **No Recompression**.

Click **OK** to close the File menu.

- Click **2. FMT** to open the format menu. Set the **Image Dimensions** to 352x288 (PAL video) or 352x240 (NTSC video). Set **ImageFormat** to **YUV9**. Click **OK**.
- To start recording click **3. REC** To stop recording hit the **ESC button** on your keyboard. Click **4. PLAY** to see what you have just recorded.

Once you have captured your video clips in an AVI format, open **MediaStudio**. When you are ready to import the video file, click on **Storyboard**, then click on the **Insert Media Files** button and then **Add Video**.

If you would like to save compressed video to save hard disk space, in the **1. FILE** menu click on the **VideoCompression** button and set the **Compressor** to one of the video compressors which are supplied with Windows. There are several, and each will give different levels of video quality and file size, so you must experiment to find the one which is right for you.

Problem: Can't control the camera using MediaStudio VideoCapture 6.0

Cause: Haven't selected the device control

Solution: To set up the device control:

- Connect your DV camcorder to your DV-Wizard IEEE-1394 capture card. Carefully follow the instructions for your capture card.
- Turn on your camcorder and set it to Play mode (or VTR mode). Again, see your camcorder's manual for specific instructions.
- Run **Video Capture 6.0** and click **Options: Select Device Control**
- In the **Device Control** dialog box, click the Current device list.
- Select your device* from the list below:

· Note: There are many capture card device control options available. The following is a list of some of the more common ones:

- TI 1394 Device Control
- PAPI 1394 Device Control
- DV Device Control (select this for other types of DV capture cards)
- MS 1394 Device Control